

# Brush Guard

## Polymer modified cementitious Flexible waterproof coatings

### Description

BRUSH GUARD is two components polymer modified waterproofing slurry based on cement and special additives.

BS 1881 part 5 1983  
I.S.A.T . DIN 1048 water penetration test.

### Use

- Roof waterproof coating.
- Foundation protection.
- Waterproof lining for water retaining structures.
- Concrete re-surfacing and undulations filler in un even surfaces.
- Seawater channels coating.
- Water tight slurry for tie bar holes.
- Anti carbonation slurry for concrete.
- Marble & granite backing to prevent water ingress

### Mixing Ratio

**For White Material:**

	Comp. A	Comp. B
For waterproofing slurry	5 kg	20 kg
For Trowelable mortar	4.5 kg	20 kg

**For Grey Material:**

	Comp. A	Comp. B
For waterproofing slurry	5 kg	11 kg
For Trowelable mortar	4.5 kg	11 kg

### Technical Data

Form:	A: Liquid B: Powder	
Colour:	Grey, White	
Density:	A+B(Mixed) = 2	
Storage:	Free from frost and moisture	
Shelf Life:	6 months	
Pot Life:	30 minutes at 20°C	
Compressive Strength:	28 days	25-40 N/mm <sup>2</sup>
Flexural Strength:	28 days	10-12 N/mm <sup>2</sup>
Bond Strength:	28 days	2 N/mm

### Precautions

- Add powder to the liquid and stir with slow speed mixer.
- Maximum mixing time is 5 minutes.
- Over mixing will result excessive air entrainment.

### Coverage

Depending on type of application two coats are always required.

- For waterproofing 1kg/m<sup>2</sup> per coat.
- For waterproofing upto 1 meter head pressure 1.5 kg./ m<sup>2</sup> per coat.
- Above 1 meter head pressure 2 kg./ m<sup>2</sup>per coat.

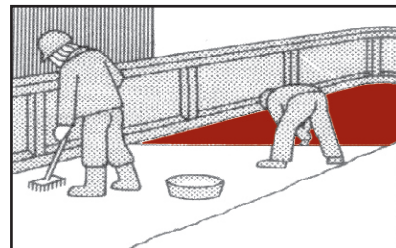
Three Coats may be required in areas of extremely high infiltration.

### Surface Preparation

Concrete, mortar and masonry surfaces must be clean, free from grease, oil and loosely adhering particles. Steel and iron surfaces must be free from scale, rust, grease and oil. All surfaces must be as true and flat as possible, saturate absorbent surfaces thoroughly.

### Application

Whilst the surface is still damp from saturation, apply the first coat and leave it harden (2-6 hrs). For slurry consistency apply with a hard plastic bristled brush or broom. For trowelable mortars use a trowel.

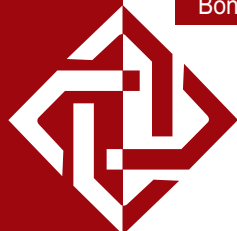


### Cleaning

- Do not leave material to harden before cleaning tools and equipment with water. Hardened material can only be removed mechanically.

### Important Recommendations

- Do not use "BRUSH-GUARD" as a bonding agent, always at cement.
- Minimum application temperature is -5 °C.
- Do not apply more than 4 kg per Sq. Meter for one layer.



**Delta Coatings  
& Sealants**