

Delta Re-fit

Mortar For concrete surface Repair

Description

DELTA RE-FIT is a Cementitious, polymer modified, 1-part mortar specially designed, fast-setting, non-shrink, high-bond strength, hydraulic cement compound for concrete patching and repair.

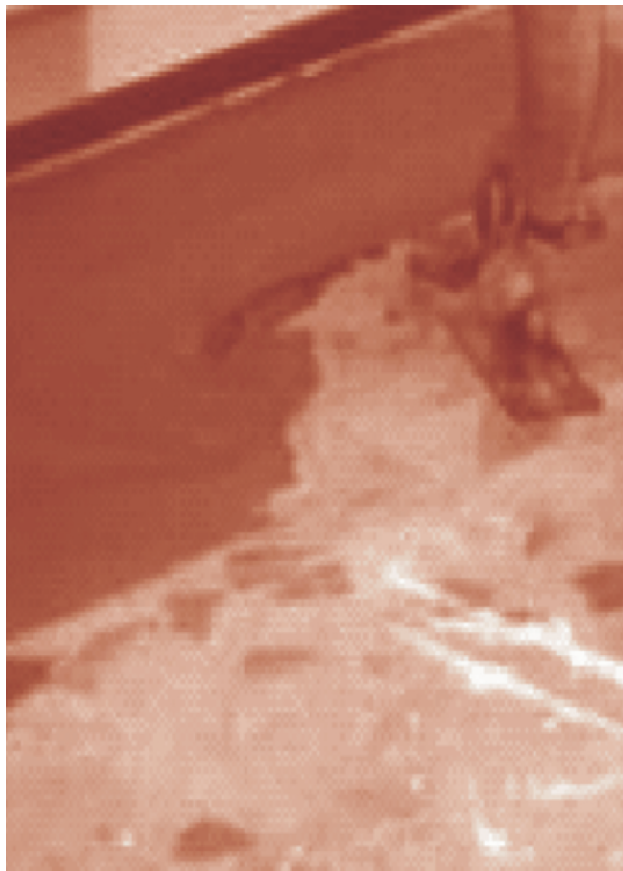
DELTA RE-FIT eliminates surface defects due to demoulding, pores or honey combs, and is suitable for small repairs on precast concrete elements, columns and beams.

Application

Substrate must be clean, free from latence, oil and grease. Remove loose particles particles prior to application. Saturate thoroughly prior to application of DELTA RE-FIT mortar

Mixing

Gradually add DELTA RE-FIT to water at no more than 3.5:1 by volume. Continue mixing for approx. 3 minutes until the desired workability is achieved.

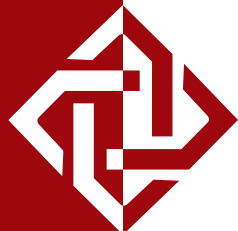


Physical Properties

Density (bulk density)		1.38
Compressive strenght	(28 days at 23°C)	30 - 45 N/mm ²
Flexural tensile strength	(28 days at 23°C)	4 - 6 N/mm ²
Bond-strength to concrete	(28 days at 23°C)	1.5 - 2.5 N/mm ²
Modulus of elasticity		19,600 N/mm ²
Coefficient of thermal expansion		14 x 10 ⁻⁶ m / °C

Packaging

15 kg. Bucket



**Delta Coatings
& Sealants**