

Delta Mastic

SBS modified bituminous sealant

Hot poured

Description _____ **Surface Preparation** _____ **Application** _____

DELTA MASTIC is a hot applied elastomeric joint sealant made from SBS rubber elasticized with bitumen and solvents. It provides a highly elastic seal suitable for expansion / contraction & construction joints.

- All surfaces must be clean and free from all loosely adhering particles.
- Roof surface cracks over 1.5mm in width must be cut into ¼"×½".

Heat DELTA MASTIC to about 190°C by using an oil jacketed heating vessel fitted with stirrer and thermometer. Do not overheat. Joints should be filled to the surface of the concrete or to the level specified. Joint seals in carriage ways are normally finished in 3mm to 6mm depression to avoid extrusion.

Features _____

- Excellent for movement/ construction joints and cracks.
- Flexible seal between large pre-cast elements.
- Good adhesion to concrete, brick, natural & artificial stone.
- Joint seal in cantilever & Flat roof.

Priming _____

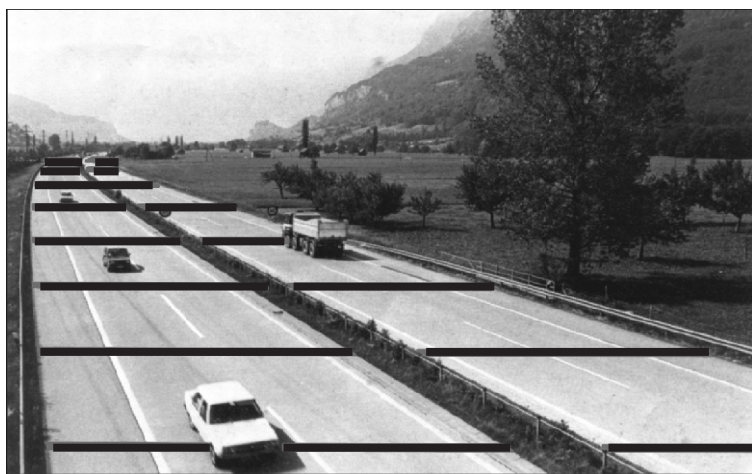
In general no primer is required.

Movement Capacity _____

30% of the average joint width. (In shear 25%)

Joint Configuration _____

For joints up to 10 mm wide:
Width: Depth ratio is 1 : 1
For joints over 10 mm wide:
Width: Depth ratio is 2 : 1



Technical Data

TYPE:	Elastomeric, SBS Rubber/Bitumen	
Shelf Life:	3 years when unopened	
Density at 25°C:	1.07	ASTM D 71
Application Temp.:	+5°C	ASTM D 1191
Heating & Pouring Temp.:	190°C	ASTM D 1191
Penetration at 25°C:	90 dmm.	ASTM D 1191
Flow at 60°C:	03 mm. (Max.)	ASTM D 1191
Bond at 17.8°C:	Compatible	ASTM D 1191
Resilience at 25°C:	80% (min.)	ASTM D 3407
Asphalt Compatibility:	Compatible	ASTM D 340
Elongation at 25°C	400 % (min.)	ASTM D 412
Resistance to sunlight (UV)	No Erosion or	
(Weather-O-Meter,2000 Hrs.)	Cracking	ASTM G 53
Resistance to Water :	Excellent	
(Weather-O-Meter,2000 Hrs.)		ASTM G 53
Non-Volatile Content :	99.9% Evaporation at 100°C	
Packaging:	4.0 Kgs,180 Kgs.	



**Delta Coatings
& Sealants**